



Cranston Road, SE23 | £1,100,000

02087029444

foresthill@pedderproperty.com

pedder
We live local



In General

- Four double bedrooms
- Potential to extend STPP
- Large family bathroom suite
- Huge rear garden, perfect for dining al fresco
- Driveway
- Close to Forest Hill Station
- Excellent condition
- Large front reception room
- Spacious kitchen/diner
- Bi-folding doors

In Detail

An incredible four double bedroom period family home for sale in the heart of Forest Hill, boasting a huge west facing rear garden.

This wonderful home comprises a large front reception room complete with a bay window and fireplace, a second reception room which is currently used a study and works great as a playroom, a large bathroom suite with a separate walk-in shower, a ground floor WC/utility room, four double bedrooms, and a modern kitchen/dining room that is perfect for entertaining as it leads directly onto a large private rear garden. Further benefits include a spacious front driveway, an abundance of light, plenty of storage, wooden flooring, and so much more.

Located just 0.6 miles from Forest Hill station, the property offers fantastic transport links to London Bridge, Canada Water, Shoreditch, Whitechapel, Highbury & Islington, and many other destinations. It is also just a short distance from various amenities, including a variety of restaurants, coffee shops, cafés, gastropubs, parks, and highly popular private and state schools.

Viewings are strongly recommended. Call the Pedder Forest Hill sales team to arrange a viewing today.

EPC: C | Council Tax Band: E

1

2

3

4

5

6

7

8

9

10

1

2

3

4

5

6

7

8

9

10

1

2

3

4

5

6

7

8

9

10

1

2

3

4

5

6

7

8

9

10

1

2

3

4

5

6

7

8

9

10

1

2

3

4

5

6

7

8

9

10

1

2

3

4

5

6

7

8

9

10

1

2

3

4

5

6

7

8

9

10

1

2

3

4

5

6

7

8

9

10

1

2

3

4

5

6

7

8

9

10

1

2

3

4

5

6

7

8

9

10

1

2

3

4

5

6

7

8

9

10

1

2

3

4

5

6

7

8

9

10

1

2

3

4

5

6

7

8

9

10

1

2

3

4

5

6

7

8

9

10

1

2

3

4

5

6

7

8

9

10

1

2

3

4

5

6

7

8

9

10

1

2

3

4

5

6

7

8

9

10

1

2

3

4

5

6

7

8

9

10

1

2

3

4

5

6

7

8

9

10

1

2

3

4

5

6

7

8

9

10

1

2

3

4

5

6

7

8

9

10

1

2

3

4

5

6

7

8

9

10

1

2

3

4

5

6

7

8

9

10

1

2

3

4

5

6

7

8

9

10

1

2

3

4

5

6

7

8

9

10

1

2

3

4

5

6

7

8

9

10

1

2

3

4

5

6

7

8

9

10

1

2

3

4

5

6

7

8

9

10

1

2

3

4

5

6

7

8

9

10

1

2

3

4

5

6

7

8

9

10

1

2

3

4

5

6

7

8

9

10

1

2

3

4

5

6

7

8

9

10

1

2

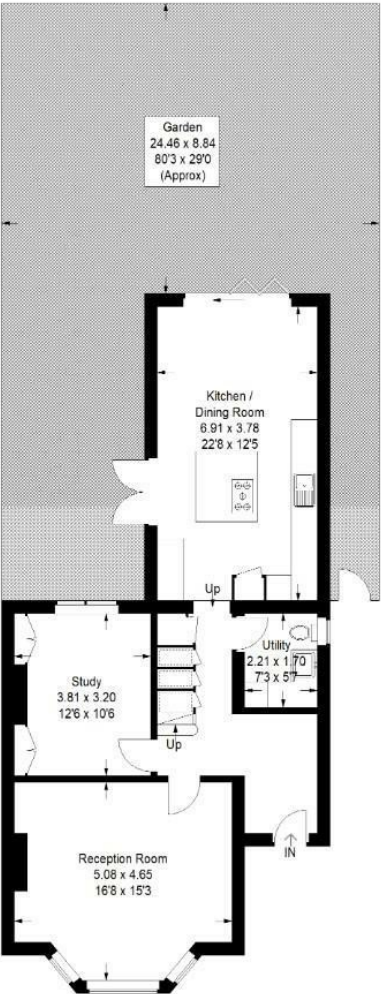
3

4

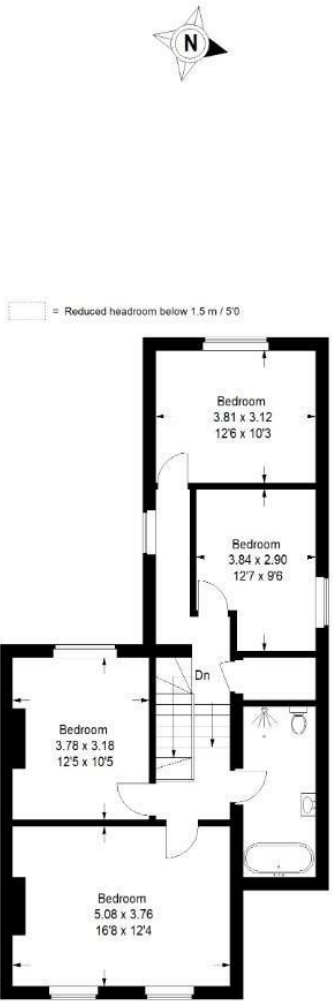
Floorplan

Cranston Road, SE23

Approximate Gross Internal Area
156.5 sq m / 1685 sq ft

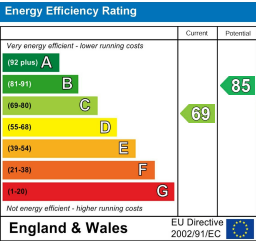


Ground Floor



First Floor

Copyright www.pedderproperty.com © 2025
These plans are for representation purposes only as defined by RICS - Code of Measuring Practice.
Not drawn to Scale. Windows and door openings are approximate. Please check all dimensions, shapes and compass bearings before making any decisions reliant upon them.



Pedder Property Ltd trading as Pedder for themselves and for the vendor/landlord of this property whose agents they are, give notice that (1) these particulars do not constitute any part of an offer or contract, (2) all statements contained within these particulars are made without responsibility on the part of Pedder or the vendor/landlord, (3) whilst made in good faith, none of the statements contained within these particulars are to be relied upon as a statement of representation or fact, (4) any intending purchaser/tenant must satisfy him/herself by inspection or otherwise as to the correctness of each of the statements contained within these particulars, (5) the vendor/landlord does not make or give either Pedder or any person in their employment any authority to make or give representation or warranty whatsoever in relation to this property.